



**AC513-01**  
Single channel AC mechanical switch

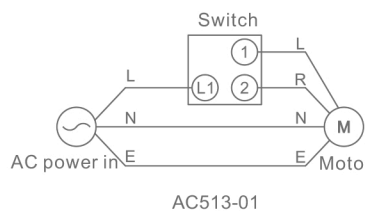


**AC513-02**  
Single channel low voltage mechanical switch

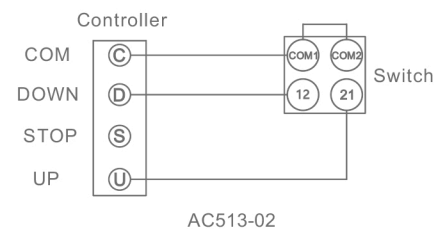
## AC513 Mechanical Switch

### Features

- ❖ Natural design
- ❖ High hardness, anti-scratch
- ❖ Fancy frame design, anti-aging
- ❖ Matte treatment on surface with excellent tactility, damp proof and stain-proof



AC513-01



AC513-02

### Parameters

Model No.	Max. Current	Voltage	Working Temp.
AC513-01	10A	250V	-20°C~+55°C
AC513-02	5A	30VDC	-20°C~+55°C